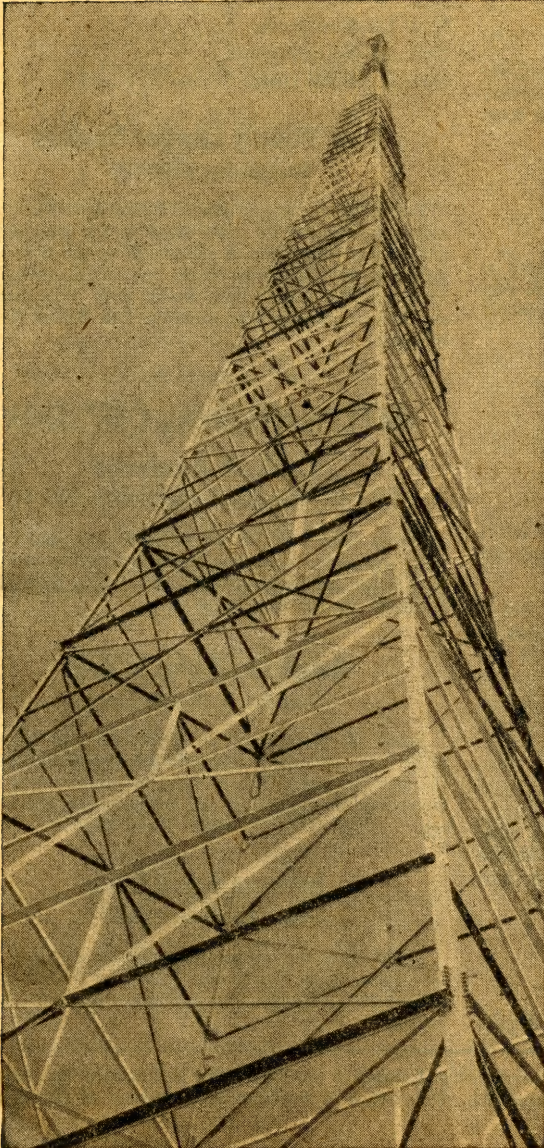


**UNIVERSITY OF OKLAHOMA**  
**BULLETIN**



**W**  
**N**  
**A**  
**D**

**ISSUE**  
For  
**NOVEMBER**



**NOVEMBER 1**  
**1948**



## PROGRAM NOTES

This month WNAD presents for your listening pleasure over 100 programs, including appearances by University faculty members, state officials, and numerous individuals, young and old, from over the state. Together with the music programs scheduled by the WNAD music department, they insure "all day good listening" for you. Keep tuned to 640 on your radio dial for broadcasts of the southwest's oldest educational radio station.

### FARM & GARDEN

#### County Agent Reports

Saturday, 11:45-12:00

Farmers and agriculturalists will be particularly interested in this series presented by Cleveland County Agent Ed Chambers. Mr. Chambers discusses the latest news on the farm front.

#### State Garden Clubs

Thursday, 1:00-1:15

Flowers and gardens are spotlighted each week at this time. Your hostess, Mrs. A. J. Williams, will suggest planting and growing methods as well as seasonal varieties of flowers and plants for your gardens.

\* \* \* \*

### HERE AND THERE

#### Current Financial Affairs

Thursday, 5:15-5:30

Prof. B. H. Gildersleeve brings you practical information about financial matters on a local, national and international basis. His topics this month are:

- Nov. 4—Types and purposes of investment.
- Nov. 11—Safety, income and appreciation factors of securities.
- Nov. 18—Role of the securities markets.
- Nov. 25—Current investment problems.

#### Information Desk

Friday, 1:15-1:30

E. G. (Pop) Holdren continues his weekly talks about veterans benefits and answers questions relative to veterans' welfare. Mr. Holdren is the local VA Contact Representative.

#### The Question Box

Saturday, 10:15-10:30

Norman grade school children continue their quiz

contest sponsored by the Norman Junior Chamber of Commerce.

- Nov. 6—Second graders.
- Nov. 13—First grade.
- Nov. 20—Seventh grade.
- Nov. 27—Sixth grade.

### The Young Lawyer Speaks

Wednesday, 4:30-4:45

Presenting the young lawyer's idea of the law as a social system and its relationship to the government and society, this series is sponsored by the School of Law and the Oklahoma Junior Bar Conference of the American Bar Association. Rollin Dale Vliet, associate professor of law, represents the Law School on the broadcasts.

\* \* \* \*

### INTERNATIONAL OUTLOOK

#### Look at Australia

Thursday, 11:45-12:00

Henry Milo, well-known commentator, and representatives of the Australian News and Information Bureau bring you educational and interesting talks about Australia on this transcribed series.

#### Russia and the World

Monday, 4:30-4:45 p.m.

James G. Watson, of the Department of Government, continues this series with weekly discussions on the Government of Russia. Next month you will hear lectures on the geography and geo-politics of this country.

#### International Club

Nov. 13-17, 5:15-5:30

Members of the campus International club will present music from their native lands and discussions of their home countries. Fali Spencer, from India, is in charge.

---

University of Oklahoma Bulletin is issued semi-monthly. Entered at the Post Office at Norman, Oklahoma, as second class matter under the Act of August 24, 1912. Office of Publication, University of Oklahoma Press.

NEW SERIES NO. 1005

NOVEMBER 1, 1948



## The World in Review

Daily, 5:00-5:15

Five experts continue this series on the international outlook.

- Monday: Dr. Harry E. Hoy, geography.  
 Tuesday: Economics professors.  
 Wednesday: Dr. Howard Eaton, philosophy.  
 Thursday: James Watson, government.  
 Friday: Dr. M. L. Wardell, history.

\* \* \* \*

## BACKWARD GLANCE

### Customs of Mankind

Wednesday, 4:15-4:30

Continuing a discussion of the varied cultures and societies as they have existed around the world, Dr. Karl Schmitt takes up more complex groups each week. This gradual range from the "simple" to "complex" societies will illustrate the point that difference between them is only a matter of degree.

- Nov. 3—Australian Aborigines.  
 Nov. 10—Yukaghir of Northeast Asia.  
 Nov. 17—Kwoma of New Guinea.  
 Nov. 24—Cheyenne of the Plains.

## Dramatic Moments in History

Tuesday, 9:30-9:45

Dr. A. K. Christian discusses some of the most important dramatic situations in the past which have had profound influence on history.

- Nov. 2—Hampden Court Conference.  
 Nov. 9—The Landing of the Pilgrims.  
 Nov. 16—Trial of Charles I.  
 Nov. 23—Martin Luther at Worms.  
 Nov. 30—Bacon's Rebellion.

## Pioneers of the Southwest

Tuesday, 4:30-4:45

Those persons who migrated to new lands found their ways of life had to be radically revised to fit new environments. Dr. E. E. Dale discusses some of the ways pioneers adapted themselves to their new homes, and pays particular attention to life ways of the last frontier, that of the Prairie West from 1875 to 1900.

- Nov. 2—Clothing of the Pioneers.  
 Nov. 9—Speech of the Frontier.  
 Nov. 16—The Social Pioneers.  
 Nov. 23—The Frontier School.  
 Nov. 30—Art and Music on the Frontier.

## LANGUAGE AND LITERATURE

### 101 Great Books

Monday, 9:30-9:45

So the listener may be informed about books which constitute good reading and will be interesting to the average reader, Prof. Jesse L. Rader, University Librarian discusses the following outstanding books:

- Nov. 1—Hobbes: LEVIATHAN.  
 Nov. 8—Hugo: LES MISERABLES.  
 Nov. 15—Dumas: THREE MUSKETEERS.  
 Nov. 22—John Stuart Mill: AUTOBIOGRAPHY.  
 Nov. 29—Stevenson: TREASURE ISLAND.

### Books Abroad

Friday, 3:15-3:30

This new "Book of the Week" series of selections from recent books and articles (in English) about foreign writers and literatures is continued by Mrs. Bernice Duncan of the Books Abroad staff. Her November schedule includes:

- Nov. 5—"About Theseus" by Paul Nizan.  
 Nov. 12—"The Classical Moment."  
 Nov. 19—"The Road to Santa Fe."  
 Nov. 25—"Chinese Epigrams Inside Out and Proverbs."

## English Coffee-House

Wednesday, 3:30-4:00

You are invited to participate via your microphone in these discussions of great literary masterpieces in the Western World. Staff members of the Department of English talk about the part these works have played in shaping the thinking of the literate American of today.

- Nov. 3—Dante: The Divine Comedy.  
 Nov. 10—Shakespeare: Troilus and Cressida.  
 Nov. 17—The Bible (King James Version).  
 Nov. 24—Milton: Paradise Lost.

## Great Men and Books

Friday, 4:30-4:45

Dr. Gaston Litton, University archivist, continues his stories about the influence reading has had on prominent Americans.

- Nov. 5—Luther Burbank.  
 Nov. 12—Lew Wallace.  
 Nov. 19—Otis Skinner.  
 Nov. 26—Henry Ford.



## Language Broadcasts

For elementary lessons in German and Spanish, tune to WNAD Monday through Thursday at 10:15 a.m. Spanish lessons are presented by Mr. Leroy Shelton Monday and Wednesday and German lessons are presented by Professor Fred Eikel on Tuesday and Thursday mornings. Both men are members of the Department of Foreign Languages staff. The lessons are 30 minutes long.

## Literary Criticism

Monday, 3:15-3:30

Are you interested in knowing the usefulness of criticism? Dr. John M. Raines of the Department of English shows what we today can learn from great critics of the past. Those he has selected represent a point of view seen in modern critics.

- Nov. 1—Castelvetro.
- Nov. 8—Sir Phillip Sidney.
- Nov. 15—Dryden and Dennis.
- Nov. 22—Addison.
- Nov. 29—Dr. Johnson.

## New Worlds in Books

Thursday, 3:45-4:00

After hearing these reviews of new books from leading American publishers, you will probably want to add them to your library. November selections and reviewers are:

- Nov. 4—Robert Cantwell's "NATHANIEL HAWTHORNE, The American Years," (Rinehart) reviewed by Dr. Leonard Beach.
- Nov. 11—Saxe Commins collection of "BASIC WRITINGS OF GEORGE WASHINGTON," (Random House) reviewed by Dr. A. B. Sears.
- Nov. 18—John T. Howard's "THE WORLD'S GREAT OPERAS (Random House) reviewed by Hamilton Ford.
- Nov. 25—Charles Neider's "SHORT NOVELS OF THE MASTERS" (Rinehart) reviewed by Dr. Kester Svendsen.

## Leisure with the Classics

Friday, 10:30-10:45

Greek and Latin classics and their value to moderns are discussed in this series conducted by Dr. H. Lloyd Stow, professor of Greek, and other members of the department of classical languages.

\* \* \* \* \*

## NEWS & RELATED PROGRAMS

### Newscast Schedule

Morning

8:00- 8:02—Weather Report.

8:45- 9:00—NEWS ROUNDUP (AP).

9:45-10:00—Sooner News.

10:45-11:00—WORLD NEWS (AP).

Afternoon

12:45-12:55—Consumer-Farm News, (Tues., Thurs., Sat.)

12:55- 1:00—Weather Report.

2:45- 3:00—WORLD NEWS (AP).

4:45- 5:00—NEWS OF THE NATION (AP).

## Today's Good Listening

Daily, 8:02-8:05

For a preview of each day's best in radio listening, tune to 640 and plan your listening schedule.

## WNAD Almanac

Daily, 8:05-8:15

For a brief look at the outstanding events of the day Bill Morgan brings you commentary on national and international affairs. This information is supplied by the leased wire of the Associated Press.

## Young Manpower at Work

Thursday, 3:30-3:45

Kenneth Harris presents activities of the Junior Chambers of Commerce on this weekly series. During November he will present:

- Nov. 4—Governmental affairs committee of the Oklahoma Jaycees, Keith Scheurman, chairman.
- Nov. 11—Joseph H. Saunders, jr., vice president of the U. S. Junior Chamber of Commerce.
- Nov. 18—Blackwell Junior Chamber.
- Nov. 25—Newscast concerning National Jaycee Memorial Week December 1-7.

\* \* \* \* \*

## FROM OU TO YOU

### Football Games

Saturdays, 2:15

Dave Martin, WNAD's sportcaster, brings you your armchair play-by-play account of O.U.'s home games in November. Final games are:

- Nov. 6—Missouri at Norman, (Homecoming).
- Nov. 13—Nebraska at Norman.
- Nov. 20—Kansas at Lawrence.
- Nov. 27—Oklahoma Aggies at Stillwater.



## Sooner Poll

Monday, 3:45-4:00

Unrehearsed comment of University students on current topics of interest is heard on this program sponsored by the Union Activities Board. The broadcast originates in the Union Lounge.

## People You Should Know

Tuesday, 2:30-2:45

Outstanding faculty members and officials on the University campus are interviewed each week by radio students.

\* \* \* \*

## OKLAHOMA PROGRAMS

### Around Oklahoma

Tuesday, 3:30-4:00

Civic leaders from Oklahoma cities appear on this program to acquaint you with their own hometowns. Kenneth Harris will present representatives of the following cities:

- Nov. 2—Pawhuska.
- Nov. 9—Sapulpa.
- Nov. 16—Sayre.
- Nov. 23—Seminole.

### Indians for Indians

Tuesday, 1:00-1:30

Don Whistler presents members of Oklahoma's numerous Indian tribes for music and news.

### Oklahoma Editors Speak

Thursday, 4:30-4:45

Outstanding editorial comment of state newspapermen is collected for this program by Al Good, WNAD announcer.

### Report to Oklahoma

Monday, 5:15-5:30

Governor Roy J. Turner presents information about state activities on his informal bi-weekly program.

\* \* \* \*

## FOR PARENTS & TEACHERS

### Children on the March

Friday, 2:30-2:45

Continuation of a new series on child development

sponsored by the School of Social Work and the Cleveland County Child Welfare Committee.

- Nov. 5—Oklahoma City Public Schools Guidance Program, Dr. Ray Loree, co-ordinator.
- Nov. 12—Topics under Discussion by Children's Code Commission, Kenneth E. Hoffman, state secretary.
- Nov. 19—Development of the Child's Feeling of Independence and Self-Expression, Miss Hedweg Schaefer, director of University Nursery School and Kindergarten.
- Nov. 26—Norman Junior Patrols, J. W. Wheeler, Chief of Police.

## Teaching Tests Grades

Nov. 29, 4 p.m.

Dr. Henry D. Rinsland, professor of school measurements, will report 6-weeks tests results for schools participating in the standardized testing program.

## Education Forum

Friday, 3:30-4:00

Members of some of the leading professional organizations in education will present their programs on improving standards of the teaching profession.

- Nov. 5—NEA, Dr. Garold Holstine. OEA, H. E. Wrinkle. Cleveland County Teachers association, Mrs. Ethel Burkett. School Masters club, Sizemore Bowlan, Noble.
- Nov. 12—American Education Week, Superintendent Don Garrison, Norman.
- Nov. 19—Phi Delta Kappa.
- Nov. 25—Kappa Delta Pi.

## Family Life Radio Forum

Monday, 2:30-2:45

Dr. Alice Sowers, director of the Family Life Institute, will have as her guests on these programs parents and teachers from over the state. Discussion starters in November will be:

- Nov. 1—Suppose They Don't Like School?
- Nov. 8—No One Is Perfect.
- Nov. 15—The Show-Off.
- Nov. 22—Respect for Elders.
- Nov. 29—Books for Parents.

## P-T-A News

Friday, 1:00-1:15

News of the state's P-T-A groups, which last year had a membership of almost 90,000 persons, is reported for you by Mrs. Dorothy Whittlesey, secretary of the Oklahoma Congress of Parents and Teachers.



## PATTERNS IN THE ARTS

### Behind the Footlights

Wednesday, 9:30-9:45

News about the theater, including college productions, by Lazelle Dunn.

### Portraits in Miniature

Thursday, 9:30-9:45

Members of the faculty of the school of art discuss works of modern artists.

- Nov. 4—"Cos Cob" by Georgia O'Keefe—Harriet Kritzer,
- Nov. 11—"They Fought to the Last Man" by Grop-  
per—Gene Bavinger.
- Nov. 18—"Shapes of Landscapes" by Stuart Davis—  
Richard Prasch.
- Nov. 25—"Piqua, Ohio" by Don Kingman—Dorothy  
Kirk.

\* \* \* \*

## RELIGIOUS PROGRAMS

### Chapel Time

Daily, 8:15-8:30

Norman ministers continue daily devotional programs.

- Nov. 1-6—Rev. Kenneth Feaver, minister, First Pres-  
byterian church.
- Nov. 8-13—Rev. Edmund Frank, pastor, Trinity  
Lutheran church.
- Nov. 15-20—Rev. Joseph Ewing, vicar, St. Joseph's  
Episcopal church.
- Nov. 22-27—YMCA-YWCA.
- Nov. 29-Dec. 4—Rev. Phil Deschner, minister, Mc-  
Farlin Memorial Methodist church.

### Religion in the News

Monday, 3:30-3:45

Dr. Kenneth Feaver reviews news in the religious field.

### Religious Bookshelf

Reviews of outstanding religious publications will be given by Rev. Ray Wallace, First Christian Church, Norman.

- Nov. 3—MAHATMA GHANDI by E. Stanley Jones.
- Nov. 10—THE IMITATION OF CHRIST by Thomas  
A. Kempis.
- Nov. 17—A TESTAMENT OF DEVOTION by  
Thomas Kelly.
- Nov. 24—Guest Reviewer.

## Songs of the Church

Tues., Thurs., Sat., 8:30-8:45

Familiar hymns are sung for you by Geraldine Bullis Milburn, Glen Kezar, and the WNAD mixed quartet, including Richard Grundy, Jean Ash, Dan Hayes and Dorothy Neal Snead.

Tuesday—Mrs. Milburn.

Thursday—Mr. Kezar.

Saturday—Mixed Quartet.

## The Y's Present

Thursday, 2:30-2:45

WNAD listeners are invited to send questions on the Bible for this weekly YWCA-YMCA quiz program. Faculty members and students are on the quiz panel, and unanswered questions will earn for the senders a free copy of Samuel Johnson's "Book of Prayers."

\* \* \* \*

## SCIENCE PROGRAMS

### Headlines in Chemistry

Thursday, 4:15-4:30

University chemistry department members present important news in the field of science.

- Nov. 4—Dr. B. O. Heston.
- Nov. 11—Dr. Bruce Houston.
- Nov. 17—Dr. Howard Rowley.
- Nov. 24—Dr. Lloyd E. Swearingen.

### Research Report

Wednesday, 1:00-1:15

Al Good, WNAD announcer, presents a resume of recent activities and achievements of medical science.

### Science News of the Week

Tuesday, 4:15-4:30

General information about science is featured on this program by James Harlow, director of Science Service for the University Extension division.

## TOWARD BETTER LIVING

### Better Health

Monday, 1:00-1:15

Dr. Laurence T. Rogers, professor of health education, will interview members of the Oklahoma Health Department staff on this program during November.



## Design for Living

Thursday, 1:15-1:30

Inspirational messages are brought to you on this program by Hamilton Ford.

## Exploring YOU

Tuesday, 5:15-5:30

Talks about ourselves conducted by clinical psychologists of the University Guidance Service. Listeners are invited to send in appropriate questions to the experts. Address, the Guidance Service, North Campus, Norman.

- Nov. 2—Are You Neurotic?
- Nov. 9—Are You Crazy?
- Nov. 16—Can Life Be Beautiful?
- Nov. 23—Honoring thy Father and Mother.
- Nov. 30—Loving One's Neighbor.

## Melody of Life

Monday, 4:15-4:30

The University Student Health Center and the Cleveland County Medical Society sponsors these stories about famous composers who suffered serious illnesses. Combined with organ selections of their compositions is information on how modern medical science could have helped the artists.

## The Corner Drugstore

Saturday, 9:30-9:45

University pharmacists will present discussions of activities of the pharmacy profession.

- Nov. 6—The Pharmacist and the Prescription Department.
- Nov. 13—The Pharmacist and the Proprietary Drug Department.
- Nov. 20—The Pharmacist and the Animal Health Department.
- Nov. 27—The Pharmacist and the Public Health Program.

## For the Record

Friday, 9:30-9:45

Health resources of the Student Health Service are explored in this series by Betty Coed and Joe College.

- Nov. 5—Laboratory and X-Ray Services.
- Nov. 12—Health Program for Families of Students.
- Nov. 19—Mental Health in College.
- Nov. 26—Avoid the Cold Wave.

## WOMEN'S PROGRAMS

### Okla. Federated Women's Clubs

Wednesday, 2:30-2:45

Work of the Federated clubs is explained by officers of the state organization, and a WNAD staff member, Dorothy Shellman.

- Nov. 3—Newscast, Miss Shellman.
- Nov. 10—Public Welfare, Mrs. John R. Hartman, state committee chairman.
- Nov. 17—The Navajo's Tragedy, Mrs. E. C. Wheeler, first district Indian welfare chairman.

### Women's Daily

Daily, 11:00-11:15

Informal chats to housewives on fashion, beauty, health, cooking, household equipment and family life problems conducted by Georgiana Hammett, Women's editor.

## SCHOOL OF THE AIR

More than 25,000 Oklahoma school children are enrolled in at least one of the eight programs presented this fall by the School of the Air.

Each program is rebroadcast by wire recording at the time indicated in parentheses.

### News Round-up

Monday, 11:30-11:45

(Monday, 2:15-2:30)

The week's news rewritten for elementary and junior highschool pupils.

### At the End of the Rainbow

Thursday, 1:30-1:45

(Friday, 11:30-11:45)

A story series for the first to fourth grades, selected by Mrs. Mary Marable, associate professor of library science.

- Nov. 4—ELLA, THE ELEPHANT by Kurt Wiese.
- Nov. 11—HANS AND HIS DOG by Maud Lindsay.
- Nov. 18—The FIRST THANKSGIVING by Kate Douglas Wiggin and Nora Smith.
- Nov. 25—THE ORGAN RECITAL by Eleanor Estes.

### Rhythm and Song

Monday, 1:15-1:45

(Wednesday, 11:30-12:00)

Mrs. Dolly Connally, assistant professor of music



November 1st

# WNAD PROGRAM

1000 Watts

"Your Best Bet for A

TIME	MONDAY	TUESDAY	WEDNESDAY
7:45	Musical Merry-Go-Round	Musical Merry-Go-Round	Musical Merry-Go-Round
8:00	Weather Report	Weather Report	Weather Report
8:02	Today's Good Listening	Today's Good Listening	Today's Good Listening
8:05	WNAD Almanac	WNAD Almanac	WNAD Almanac
8:15	Chapel Time	Chapel Time	Chapel Time
8:30	Console Masterworks	Songs of the Church	Console Masterworks
8:45	NEWS ROUNDUP (AP)	NEWS ROUNDUP (AP)	NEWS ROUNDUP (AP)
9:00	Morning Concert	Morning Concert	Morning Concert
9:15	" "	" "	" "
9:30	101 Great Books	*Dramatic Moments	Behind the Footlights
9:45	SOONER NEWS	SOONER NEWS	SOONER NEWS
10:00	Melodic Moments	Melodic Moments	Melodic Moments
10:15	Beginning Spanish	Elementary German	Beginning Spanish
10:30	" "	" "	" "
10:45	WORLD NEWS (AP)	WORLD NEWS (AP)	WORLD NEWS (AP)
11:00	Women's Daily	Women's Daily	Women's Daily
11:15	Songs to Remember	Songs to Remember	Songs to Remember
11:30	Okla. School of the Air	Okla. School of the Air	Okla. School of the Air
11:45	Excursions in Science	Rhyme Without Reason	" " " " "
12:00	Noonday Concert	Noonday Concert	Noonday Concert
12:15	" "	" "	" "
12:30	" "	" "	" "
12:45	*Folk Songs	CONSUMER-FARM NEWS	Folk Songs
12:55	Weather Report	Weather Report	Weather Report
1:00	Better Health	Indians for Indians	Research Report
1:15	Okla. School of the Air	" " "	*Religious Bookshelf
1:30	" " " " "	Okla. School of the Air	Okla. School of the Air
1:45	Music You Want	Music You Want	Music You Want
2:00	" " "	" " "	" " "
2:15	Okla. School of the Air	Okla. School of the Air	Okla. School of the Air
2:30	Okla. Family Life Forum	People You Should Know	Okla. Fed. Women's Club
2:45	WORLD NEWS (AP)	WORLD NEWS (AP)	WORLD NEWS (AP)
3:00	A Song for You	Notes and Clefs	Wednesday Musicals
3:15	*Literary Criticism	" " "	" " "
3:30	*Religion in the News	Around Oklahoma	English Coffee House
3:45	Sooner Poll	" "	" " "
4:00	Music Matinee	Music Matinee	This Is Oklahoma
4:15	*Melody of Life	Science News of Week	*Customs of Mankind
4:30	*Russia and the World	*Pioneers of the Southwest	*Young Lawyers Speak
4:45	NEWS OF NATION (AP)	NEWS OF THE NATION (AP)	NEWS OF THE NATION (AP)
5:00	*The World in Review	*The World in Review	*The World in Review
5:15	Report to Oklahoma	*Exploring YOU	Marine Story
5:30	SIGN OFF	SIGN OFF	SIGN OFF



of Educational Broadcasters

# AM SCHEDULE

Through November 30th

"Day Good Listening"

640 Kilocycles

THURSDAY	FRIDAY	SATURDAY	TIME
Musical Merry-Go-Round	Musical Merry-Go-Round	Musical Merry-Go-Round	7:45
Weather Report	Weather Report	Weather Report	8:00
Today's Good Listening	Today's Good Listening	Today's Good Listening	8:02
WNAD Almanac	WNAD Almanac	WNAD Almanac	8:05
Chapel Time	Chapel Time	Chapel Time	8:15
Songs of the Church	Console Masterworks	Songs of the Church	8:30
NEWS ROUNDUP (AP)	NEWS ROUNDUP (AP)	NEWS ROUNDUP (AP)	8:45
Morning Concert	Morning Concert	Morning Concert	9:00
" "	" "	" "	9:15
Portraits in Miniature	*For the Record	*The Corner Drugstore	9:30
SOONER NEWS	SOONER NEWS	SOONER NEWS	9:45
Melodic Moments	Melodic Moments	Melodic Moments	10:00
Elementary German	Okla. School of the Air	*The Question Box	10:15
" "	*Leisure With the Classics	" " "	10:30
WORLD NEWS (AP)	WORLD NEWS (AP)	WORLD NEWS (AP)	10:45
Women's Daily	Women's Daily	Women's Daily	11:00
Songs to Remember	Songs to Remember	Songs to Remember	11:15
Okla. School of the Air	Okla. School of the Air	*Homes on the Land	11:30
A Look at Australia	Adventures in Research	County Agent Reports	11:45
Noonday Concert	Noonday Concert	Noon-Day Concert	12:00
" "	" "	" " "	12:15
" "	" "	" " "	12:30
CONSUMER-FARM NEWS	*Folk Songs	CONSUMER-FARM NEWS	12:45
Weather Report	Weather Report	Weather Report	12:55
State Garden Clubs	P-T-A News	Voice of the Army	1:00
Design for Living	Information Desk	March Time	1:15
Okla. School of the Air	Okla. School of the Air	*Here's to Veterans	1:30
Music You Want	Music You Want	Music You Want	1:45
" " "	" " "	" " "	2:00
Okla. School of the Air	Okla. School of the Air	Football Games	2:15
The Y's Present	*Children on the March	" "	2:30
WORLD NEWS (AP)	WORLD NEWS (AP)	" "	2:45
Faculty Recital	We Present	" "	3:00
" "	Books Abroad	" "	3:15
Young Manpower at Work	*Education Forum	" "	3:30
New World in Books	" "	" "	3:45
Music Matinee	Drama Time	" "	4:00
Headlines in Chemistry	March of Dimes	" "	4:15
Okla. Editors Speak	*Great Men and Books	" "	4:30
NEWS OF THE NATION (AP)	NEWS OF THE NATION (AP)	" "	4:45
The World in Review	*The World in Review	" "	5:00
*Current Financial Affairs	*Holland Calling	*International Club	5:15
SIGN OFF	SIGN OFF	SIGN OFF	5:30



education, directs this classwork in music for grades 1 to 8.

- Nov. 1—Rounds We All Should Know.
- Nov. 8—Doing What the Music Tells Us to Do.
- Nov. 15—Chanting the Words and Rhythm.
- Nov. 22—Songs of Thanksgiving.

## **Making Friends With Music**

**Tuesday, 1:30-1:45**  
**(Friday, 2:15-2:30)**

A musical tour of the world for upper elementary students through recorded music selections. Dan Hayes, WNAD music director, and Jean Ash, music librarian, act as guides.

- Nov. 2—Our Piano Friends in Poland.
- Nov. 9—Folk Songs of Czechoslovakia.
- Nov. 16—Bohemian Composers.
- Nov. 23—Hungarian Rhapsody.
- Nov. 30—More Friends in Hungary.

## **Spotlight on Health**

**Wednesday, 1:30-1:45**  
**(Thursday, 11:30-11:45)**

Dr. L. T. Rogers, professor of health education, presents resource people in health.

- Nov. 3—You May Be A Million Years Old (Heredity).
- Nov. 10—Your Brain Is Mostly Water.
- Nov. 17—You Live in an Ocean of Your Own (Body Fluids).
- Nov. 24—Use 'em or You'll Lose 'em (Muscles).

## **Know Your Oklahoma**

**Tuesday, 11:30-11:45**

The problem of conservation in Oklahoma is taken up in this first series of a 4-year cycle on Oklahoma.

- Nov. 2—Nature's Bookkeeping.
- Nov. 9—A State That Tilts.
- Nov. 16—Where Floods Begin.
- Nov. 23—Where the Wind Comes Sweeping Down the Plains.
- Nov. 30—Duster!

## **Our Neighbors in Space**

**Friday, 10:15-10:30**  
**(Tuesday, 2:15-2:30)**

Continuation of a new series on the earth by Dr. J. O. Hassler, professor of mathematics.

- Nov. 5—The Sun's Family.
- Nov. 12—Mercury, the Sun's Nearest Neighbor.
- Nov. 19—Venus, the Earth's Twin.
- Nov. 26—Our Own World, the Earth.

## **Let's Make Things**

**Wednesday, 2:15-2:30**  
**(Friday, 1:30-1:45)**

Pointers for the arts and crafts classes which have little equipment, given by Lonnie Huddleston, assistant professor of education.

- Nov. 3—Deciding What to Make.
- Nov. 10—Planning How to Make It.
- Nov. 17—Planning How to Make It.
- Nov. 24—Constructing Woodwork Projects.

## **WNAD'S LIVE MUSIC PROGRAMS**

### **A Song for You**

**Monday 3:00 to 3:15**

Your favorite songs sung by Dorothy Neal Snead.

### **Music Faculty Recitals**

**Thursday 3:00-3:30**

During November, these members of the school of music faculty will be presented in 30-minute recitals:

- Nov. 4—Lyman Stanley, pianist, professor.
- Nov. 11—Gus Lease, baritone, instructor.
- Nov. 18—Celia Mae Bryant, pianist, assistant instructor.
- Nov. 25—Wilda Griffin, soprano, associate professor.

### **We Present**

**Friday, 3:00-3:15**

Outstanding students in the school of music will be presented in quarter-hour recitals of both vocal and instrumental music.

### **Wednesday Musicale**

Mid-week recitals presented by members of the Oklahoma Federation of Music clubs and three honorary music fraternities on the campus.

- Nov. 3—Mu Phi Epsilon.
- Nov. 10—Sigma Alpha Iota.
- Nov. 17—Oklahoma Federation of Music Clubs.
- Nov. 24—Phi Mu Alpha.



## Console Masterworks

Monday, Wed., Fri., 8:30-8:45

Mildred Andrews, assistant professor of music, and her students bring you organ music. Miss Andrews appears on Wednesdays and her students on Mondays and Fridays.

## Folk Songs

(Mon., Wed., Fri., 12:45)

Bob Duncan, University arts and sciences senior, presents folk songs familiar to Oklahomans. Duncan is making an intensive study of folk songs handed down by state pioneers.

## MORNING CONCERT

Daily, 9:00-9:30

- Nov. 1—BEETHOVEN, *Piano Concerto No. 4 in G Major Op. 58*.
- Nov. 2—SCHUMANN, *Symphony No. 1 in B Flat Major Op. 38*.
- Nov. 3—GLUCK, *Orpheus*, Dance of the Furies; SAINT-SAENS, *Samson and Delilah*, Act III Bacchanale; MASSENET, *Le Cid—Ballet Suite*.
- Nov. 4—BRAHMS, *Tragic Overture*; SIBELIUS, *Tapiola* (Symphonic Poem).
- Nov. 5—DELIUS, *Fennimore and Gerda*, Intermezzo; *Sea Drift*.
- Nov. 6—STRAUSS, *Wine Women and Song*; *Treasure Waltz*; *Motoren Walzer*; *Tales from the Vienna Woods*.
- Nov. 8—MOUSSORGSKY, *Khovantchina*, Persian Dance; RACHMANINOFF, *Rhapsody on a Theme by Paganini for Piano and Orchestra*.
- Nov. 9—WOLF-FERRARI, *Jewels of the Madonna*, Dance of the Camorristi; DEBUSSY, *La Mer*.
- Nov. 10—BEETHOVEN, *Fidelio*, *Overture*; WAGNER, *Tristan Und Isolde*, *Love Music*.
- Nov. 11—SCHUBERT, *Symphony No. 5 in B Flat Major*.
- Nov. 12—RAMEAU, *Les Fete d'Hebe*, *Musette*; DOHNANYI, *Suite for Orchestra*.
- Nov. 13—ROMBERG, *Selections*; RODGERS, *My Heart Stood Still*.
- Nov. 15—CHAUSSON, *Symphony in B Flat Major Op. 20*.
- Nov. 16—MOZART, *Concerto No. 19 in F Major K. 459 for Piano and Orchestra*.
- Nov. 17—COUPERIN, *La Sultane Suite*, *Overture and Allegro*; ALBENIZ, *Iberia*.
- Nov. 18—WAGNER, *Tannhauser*, *Bacchanale* (*Venusberg Music*); RIMSKY-KORSAKOV, *Capriccio Espagnol*.
- Nov. 19—SIBELIUS, *Symphony No. 3 in C Major*.
- Nov. 20—HANDEL, *Sarabande*; ROSSINI-RESPIGHI, *The Fantastic Toyshop*, *Ballet*.
- Nov. 22—OFFENBACH, *Gaite Parisienne*; RAVEL, *Le Tombeau de Couperin*.
- Nov. 23—HANDEL, *Xerxes, Largo*; BEETHOVEN, *Symphony No. 8 in F Major*.
- Nov. 24—BIZET, *L'Arlesienne Suite No. 2*, *Menuet*; SAINT-SAENS, *Concerto No. 2 in G Minor for Piano and Orchestra*.
- Nov. 25—SIBELIUS, *The Tempest*, *Prelude to Incidental Music*; MOUSSORGSKY, arr. Stokowski *Boris Godounov* (*Symphonic Synthesis*).
- Nov. 26—DEBUSSY, *Printemps—Symphonic Suite*; RESPIGHI, *The Birds*.
- Nov. 27—TSCHAIKOWSKY, *The Sleeping Beauty—Ballet*.
- Nov. 29—BEETHOVEN, *Leonore Overture No. 3*; BRAHMS, *Variations on a Theme by Hayden*.
- Nov. 30—STRAUSS, *Salome*, *Dance of the Seven Veils*; PROKOFIEFF, *Scythian Suite*.

## MELODIC MOMENTS

Daily 10:00-10:15

- Nov. 1—ROME, *My Heart Sings*; PORTER, *Begin the Beguine*; SOUR, *Body and Soul*; AKST, *Dinah*; YOUMANS, *I Know That You Know*.
- Nov. 2—PADILLA, *La Violetera*; MORALES, *Oye Negra*; ZUAZO, *El Muerto Se Fue De Rumba*; CUGAT, *Rhumba Rhapsody*; TOUZET, *Tu Felicidad*; DUSAULT, *La Rumbantela*.



- Nov. 3—ROBIN, You're A Sweet Little Headache; Thanks for the Memory; DONALDSON, After I Say I'm Sorry; GERSHWIN, Someone to Watch Over Me; FIELDS, Exactly Like You; CARMICHAEL, Two Sleepy People.
- Nov. 4—THORNTON, When You Were Sweet Sixteen; GERSHWIN, I Got Rhythm; LITTLE Alice Blue Gown; BURKE, As Long As I'm Dreaming.
- Nov. 5—KERN, Make Believe; Why Do I Love You; You Are Love; PROVOST, Intermezzo; HERBERT, Sweethearts.
- Nov. 6—CURIEL, Vereda Tropical; HERNANDEZ, Cachita; VALENCIA, Si No Te Veo Mas; MADURA, Flamencos Y Luna; CAMACHO, Bim Bam Bum.
- Nov. 8—ROMBERG, Will You Remember; Deep in My Heart, Dear; One Kiss; The Desert Song; HERBERT, I'm Falling in Love with Someone.
- Nov. 9—HERNANDEZ, Rhumba Tambah; Los Hijos de Buda; POZO, Zarabanda; BARCELATA, Maria Elena; DOMINGUEZ, Mala Noche.
- Nov. 10—HERBERT, When You're Away; Thine Alone; Sweethearts; GERSHWIN, Delicious; ROMBERG, Song of Love.
- Nov. 11—DE SYLVA, When Day Is Done; BIZET, Flower Song from Carmen; JENSEN, Murmuring Zephyrs; RACHMANINOFF, Oft in the Silent Night.
- Nov. 12—CLINTON, Our Love; LEBIEG, Sleep; TOBIAS, Sweet and Lovely; WOODS, We Just Couldn't Say Goodbye; KREISLER, Stars in My Eyes.
- Nov. 13—FARRES, Tres Palabras; AYALA, El Mondonguero; TOUZET, No Te Importe Saber; FABREGA, Taboga; PAULOS, Inspiration.
- Nov. 15—KERN, Smoke Gets in Your Eyes; Lady Be Good; COWARD, Someday I'll Find You; NOBLE, The Very Thought of You; RODGERS-HART, Too Many Girls.
- Nov. 16—RODRIGUEZ, La Cumparsita; HERNANDEZ, Quimbamba; GAMA, Dolor Gaucho; CURIEL, Fidelidad; CAESAR, Linda Mujer.
- Nov. 17—CARMICHAEL, Star Dust; KETELBEY, In A Chinese Temple Garden; DE SYLVA, Alabama Bound; ELLINGTON, Mood Indigo.
- Nov. 18—TRADITIONAL, Dark Eyes; LIEURANCE, By the Waters of Minnetonka; MANNING, In the Luxembourg Gardens; SULLIVAN, The Lost Chord; CADMAN, I Hear A Thrush at Eve.
- Nov. 19—ROMBERG, Lover Come Back to Me; ELLINGTON, Sophisticated Lady; COATES, Sleepy Lagoon; GERSHWIN, Liza.
- Nov. 20—BRITO, Noche del Hawaii; MENDEZ, Danzon de la Negrita; CUEVAS, El Marañon; M. S. ACUNA, Secreto; MONGE, La Feria de las Flores.
- Nov. 22—AKST, Am I Blue; COATES, Sleepy Lagoon; Porter, Easy to Love; BERLIN, Check to Check.
- Nov. 23—JIMINEZ, Adios Mariquita Linda; MENDEZ, Consolacion; GUTIERREZ, Ni Pitas Ni Flautas; RUIZ, Tu Nombre; FRESEDO, Por Que.
- Nov. 24—KERN, Can't Help Lovin' Dat Man of Mine; RODGERS-HAMMERSTEIN, People Will Say We're in Love; TIERNEY, Irene; NOBLE, Love Is the Sweetest Thing.
- Nov. 25—FRIML, Donkey Serenade; KAHN, Your Eyes Have Told Me So; CONFREY, Dizzy Fingers; GERSHWIN, They Can't Take That Away From Me; KREISLER, Stars in My Eyes.
- Nov. 26—HARLING-WHITING, Beyond the Blue Horizon; ROMBERG, Selections; Will You Remember.
- Nov. 27—VELAZQUEZ, Besame Mucho; MOLINA, Guajirita Mia; RIVAS, Estoy Aprendiendo El Ingles; FIFFE, Negro Con Capa; HERNANDEZ, Cuarto Personas.
- Nov. 29—MANNING, The Treasure of Sierra Madre; CAHN, Five Minutes More; ROTHBART, Who Do You Think You're Foolin'; GADE, Jealousie; WADE, There's Nothing Lovelier Than You.
- Nov. 30—ROJO, Al Fin; SCULL, Bruca Manigua; LARA, Solamente Una Vez; RIVERA, Elube Changó; DE BRU, Take It Easy



# SONGS TO REMEMBER

Daily 11:15-11:30

- Nov. 1—R. STRAUSS, *Salome*, Thou Wouldst Not Let Me Kiss Thy Mouth, Thy Tongue Speaks No More; *Cacilie* Op. 27 No. 2; *Allerseelen* (All Souls' Day) Op. 10 No. 8.
- Nov. 2—LEGRENZI, *Eteocle and Polinice*, What Strange Whim Pursuing; FRENCH ART SONG, After A Dream; BENEDICT, The Carnival of Venice; SACCO, *Rapunzel*; SPROSS, Will O' the Wisp.
- Nov. 3—RUSSIAN FOLK SONG, *Dubinushka*; Lullaby for a Man Condemned to Be Hanged; The Troika Coachman's Love Song; The Innocent Siberian Exile.
- Nov. 4—HANDEL, *Theodora*, Defend Her Heaven; MEYERBEER, *Les Huguenots*, Act I Piff! Paff! BIZET, *Carmen*, Chanson Boheme, Les Triangles des Sistes.
- Nov. 5—WELSH TRADITIONAL SONGS, Counting the Goats; Men of Harlech; David of the White Rock; All Through the Night; FOLK SONG, John Henry.
- Nov. 6—ROMBERT, Wanting You, Who Art We to Say; Farewell to Dreams; LEHAR, Yours Is My Heart Alone.
- Nov. 8—MOZART, *Marriage of Figaro*, Dove Sono (Vanished Are Ye); *The Magic Flute*, Qui Sdegno Non S'Accende (Within These Sacred Halls); *Don Giovanni*, Batti, Batti (Scold Me, Scold Me) Act I.
- Nov. 9—ITALIAN SONGS, Sweet Oblivion; Oh Hasten Ye Maidens; Too Well You Know; In My Heart, No More I Feel; My Dear One; Oh What Loveliness.
- Nov. 10—RIMSKY-KORSAKOW, *Le Coq D'Or*, Hymn to the Sun; Song of the Viking Guest; RACHMANINOFF, The Harvest of Sorrow.
- Nov. 11—GRIFFES, By A Lonely Forest Pathway; LA FORGE, Pretty Mocking Bird; LEVITZKI, Do You Remember Op. 9; HAGEMAN, Do Not Go, My Love; RAYMOND, Let Me Always Sing.
- Nov. 12—LEMON, My Ain Folk; HOOK, Doun the Burn; HUGHES, A Ballynure Ballad; OLD IRISH, Danny Boy.
- Nov. 13—FRIML, *L'Amour Toujours L'Amour* (Love Everlasting); Selections from *You're In Love*; Selections from *The Vagabond King*.
- Nov. 15—EARLY GERMAN LIEDER, Es Steht Ein Lind'; Minnelied and Ich Spring in Diesem Ringe; Innsbruck and Braun's Meidelein; Eine Schon Tageweis; BRAHMS, Der Jager.
- Nov. 16—ARIOSTI, *Cantata for Voice with Viola D'Amore*—Air: Pur Al Fin Gentil Viola; ROSSINI, *The Barber of Seville*, Act III Terzetta—Ah! Qual Colpo.
- Nov. 17—MOUSSORGSKY, *Sunless*, Within Four Walls and In the Throng; The Idle Noisy Day Is Over; Bored and Elegy; Pride.
- Nov. 18—PURCELL, If Music Must Be the Food of Love; I Love and I Must; MOZART, *Marriage of Figaro*, Porgi Amor (Grant, Oh Love) Act II; GOLDMARK, *The Queen of Sheba*, Lift Thine Eyes.
- Nov. 19—NEGRO SPIRITUALS, Witness; I Don't Feel No Ways Tired; My Soul's Been Anchored in the Lord; Deep River; Honor! Honor!
- Nov. 20—STOLZ, Two Hearts; BERLIN, Always; It's A Lovely Day Tomorrow; KERN, More and More.
- Nov. 22—WAGNER, *Die Meistersinger*, Act II Sc. 3 The Elder's Scent Is Waxing and No Rule Could Fit It; Act III Sc. 1 Mad, Mad, All the World's Mad and But On One Evening Late.
- Nov. 23—BELLINI, *Norma*, Mira Norma Act III; PUCCINI, *Madame Butterfly*, Un Bel Di, Vedremo (One Fine Day He Shall Return).
- Nov. 24—MOUSSORGSKY, *Sunless*, Over the River; TCHAIKOVSKY, *Iolanthe*, Iolanthe's Aria Scene 1, King Rene's Aria Scene 4; None But the Lonely Heart.
- Nov. 25—BACH-GOUNOD, Ave Maria; FRANCK, O Lord Most Holy; BIZET, Agnus Dei (Lamb of God); HANDEL, *Ombra Mai Fu* (Largo).
- Nov. 26—RUSSELL, Where the River Shannon Flows; IRISH SQNG, Kevin Barry; STANFORD, Molly Brannigan; MCCONNELL, That's How I Spell I-R-E-L-A-N-D; OL-COTT, My Wild Irish Rose.



Nov. 27—PAYNE-BISHOP, Home, Sweet Home; FOSTER, I Dream of Jeanie With the Light Brown Hair, Old Folks at Home, Oh! Susanna.

Nov. 29—MOZART, Mentre Ti Lascio, O Figlia (As I Take Leave of You, Oh Daughter) K. 513; SCHUBERT, *Die Allmacht*, Gross Ist Jehovah (Great Is Jehovah) Op. 79.

Nov. 30—ROSSINI, *The Barber of Seville*, Act II Duetto-Dunque Io Son (Then I Am the One); CHAUSSON, *Chanson Perpetuelle* Op. 37.

## NOONDAY CONCERT

Daily 12:00-12:45

Nov. 1—BACH, Sarabande; *Suite No. 3 in D*; ADAM, *Giselle*, Ballet Music.

Nov. 2—TSCHAIKOWSKY, *Trio In A Minor*.

Nov. 3—HARRIS, *Symphony No. 3*; WALTON, *Concerto for Violin and Orchestra*.

Nov. 4—VON WEBER, Andante and Variations; SCHUBERT, *Sonatina No. 1 in D Major for Violin and Piano*; BRAHMS, *Sonata No. 1 in G for Violin and Piano*.

Nov. 5—HAYDN, *Symphony No. 91 in E Flat Major*; DELIUS, *Concerto for Violin and Orchestra*.

Nov. 6—BACH, *Brandenburg Concerto No. 1 in F Major*; BEETHOVEN, *Quartet No. 6 in B Flat Major Op. 18 No. 6*.

Nov. 8—BACH, Aria (Lento from *Suite No. 3 in D Major*); BARTOK, *Concerto for Violin and Orchestra*.

Nov. 9—KHATCHATURIAN, *Gayne Ballet Suite No. 1*; MENOTTI, *The Telephone* (Opera).

Nov. 10—BACH, My Jesus in Gethsemane; My Soul Is Athirst; Air for the G String from *Suite No. 3 in D*. SCHUBERT, *Symphony No. 4 in C Minor* (Tragic).

Nov. 11—MOUSSORGSKY, *A Night on Bald Mountain*; PROKOFIEFF, *Alexander Nevsky* (A Cantata).

Nov. 12—HANDEL, *Royal Fireworks Music*; MOZART, *Symphony No. 41 in C Major* "Jupiter."

Nov. 13—BACH, *Passacaglia and Fugue in C Minor*; VAUGHAN-WILLIAMS, *Symphony in F Minor*.

Nov. 15—BERLIOZ, Minuet of the Will O' the Wisps from *The Damnation of Faust*; SAINT-SAENS, *Concerto No. 4 in C Minor* for Piano and Orchestra; IBERT, *Divertissement*.

Nov. 16—KABALEVSKY, *Colas Breugnon*, Overture; KHRENNIKOV, *Symphony No. 1 Op. 4*; SHOSTAKOVICH, *Symphony No. 9 Op. 70*.

Nov. 17—DELIUS, *Koanga*, Closing Scene; RACHMANINOFF, *Concerto No. 3 in D Minor for Piano and Orchestra*.

Nov. 18—CORELLI, *Suite for String Orchestra*; HANDEL, *Water Music (Suite)*; HAYDN, *Symphony No. 93 in D Major*.

Nov. 19—MOZART, *The Abduction from the Seraglio*, Overture; BRAHMS, *Symphony No. 1 in C Minor*.

Nov. 20—HANDEL, Largetto from *Concerto No. 12*; SIBELIUS, *Symphony No. 1 in E Minor*.

Nov. 22—RIMSKY-KORSAKOW, *Dubynushka*; DVORAK, *Symphony No. 5 in E Minor*.

Nov. 23—PROKOFIEFF, The Prince and the Princess from *The Love of Three Oranges*; *Lieutenant Kije Suite*; BRITTEN, *The Young Person's Guide to the Orchestra* (Variations and Fugue on a Theme of Purcell).

Nov. 24—HANDEL, Minuet and Hornpipe from *The Gods Go A'Begging*; BEETHOVEN, *Symphony No. 6 in F Major* "Pastorale."

Nov. 25—BEETHOVEN, *Coriolan Overture*; HANSON, *Symphony No. 3 in A Minor*.

Nov. 26—RAVEL, *Concerto for Piano and Orchestra (1932)*; HINDEMITH, *Matthias the Painter*.

Nov. 27—BACH, *Prelude and Fugue in E Flat Major* (St. Anne); MOZART, *Concerto No. 20 in D Minor*.

Nov. 29—KODALY, *Hary Janos—Suite*; STRAVINSKY, *Symphony in Three Movements*.

Nov. 30—BACH, *Sheep May Safely Graze* from the *Birthday Cantata*; HANDEL, *Concerto Grosso No. 9 in F Major*; HAYDN, *Symphony No. 9 in G Major* "Surprise."



## Music You Want

Daily, 1:45-2:15

- Nov. 1—BRAHMS, *Concerto for Violin in D Major*.
- Nov. 2—Program of Johann Strauss Waltzes.
- Nov. 3—Arias from "*La Boheme*" and *Butterfly*" (Puccini).
- Nov. 4—Know Your RCA Victor Record Catalog.
- Nov. 5—BEETHOVEN, "*Pathetique*" *Sonata in C Minor*.
- Nov. 6—MENDELSSOHN, *Symphony No. 5 in D Minor*.
- Nov. 8—CHOPIN, *Les Sylphides*.
- Nov. 9—WAGNER, *Overture to Tannhauser*.
- Nov. 10—TSCHAIKOWSKY, *Concerto for Violin in D*.
- Nov. 11—BEETHOVEN, *Symphony No. 9* ("Choral").
- Nov. 12—RACHMANINOFF, *Prelude in C Sharp Minor*.
- Nov. 3—SCHUBERT, *Trio No. 1 in B Flat*.
- Nov. 15—MOZART, *Eine Kleine Nachtmusik*.
- Nov. 16—SIBELIUS, *Symphony No. 2 in D*.
- Nov. 17—"Donkey Serenade" and "Giannini Mia" (Friml).
- Nov. 18—The Music of Ernesto Lecuona.
- Nov. 19—TSCHAIKOWSKY, *Romeo and Juliet*.
- Nov. 20—HERBERT, Selections from *Eileen*.
- Nov. 22—WEINBERGER, *Schwanda*, Polka and Fugue.
- Nov. 23—ENESCO, *Roumanian Rhapsody No. 1*.
- Nov. 24—SMETANA, *The Moldau*.
- Nov. 25—Wagner Program.
- Nov. 26—Echoes from Grand Opera.
- Nov. 27—COPLAND, *Appalachian Spring*.
- Nov. 29—A Vladimir Horowitz Program.
- Nov. 30—Bluebird of Happiness.

## NOTES AND CLEFS

Tuesdays, 3:00-3:30

- Nov. 2—BACH, *Church Cantata, Sinfonia*; BEETH-

- OVEN, *Quartet No. 4 in C Minor Op. 18 No. 4*.
- Nov. 9—SCHUBERT, *Sonata in A Minor*; SCHUMANN, *Romances in A Minor*.
- Nov. 16—DVORAK, *Quintet in E Flat Major*.
- Nov. 23—PACHELBEL, *Canon*; RAMEAU, *La Pantomime*; MOZART, *Duo No. 2 in B Flat Major K. 424*; TSCHAIKOWSKY, *Quartet in E Flat Minor*, *Scherzo*.
- Nov. 30—BEETHOVEN, *Sonata No. 9 in A Major "Kruetzer" for Violin and Piano Op. 47*.

## THEMES FOR FALL PROGRAMS

For those listeners who have requested information about music themes for WNAD programs, we are happy to list them for you.

1. Musical Merry-Go-Round  
—JUMPIN AT THE WOODSIDE—Basic
2. Chapel Time  
—MY FAITH LOOKS UP
3. Morning Concert  
—LARGO FROM SYMPHONY No. 5—Shostakovich
4. Melodic Moments  
—THE MOST BEAUTIFUL GIRL IN THE WORLD—from Jumbo, Rodgers
5. Women's Daily  
—SLAVONIC DANCE No. 3—Dvorak
6. Songs to Remember  
—INTERMEZZO from *Cavalleria Rusticana*—Mascagni
7. Noonday Concert  
—ADAGIO from *Violin Sonata No. 3*—Bach
8. Music You Want  
—AIR FOR THE G STRING from *Suite No. 3 in D*—Bach
9. Notes and Clefs  
—SCHERZO from *Trio No. 1 in B Major*—Brahms
10. Music Matinee  
—TWILIGHT TIME
11. March Time  
—FAIREST OF THE FAIR—Sousa
12. End of the Rainbow  
—OVER THE RAINBOW—Arlen, Harburg
13. Oklahoma Family Life Forum  
—ACCELERATION WALTZ—J. Strauss
14. Songs of Yesteryear  
—SOUVENIR—Drdla



Radio Station WILL  
Univ. of Ill.  
Urbana, Ill.

---

## WHAT THEY SAY ABOUT WNAD

"Thanks to all of you for the splendid programs originating over WNAD." . . . Robert A. Chappell, Tulsa.

"I have greatly enjoyed the WNAD programs. . . . The music is always a source of pleasure." . . . Miss Stella Sutherland, Edmond.

"It has been a distinct relief to turn to WNAD with its consistently high quality program." . . . C. W. Luekens, Oklahoma City.

"My husband and I still enjoy listening to WNAD at every possible time, and especially the noonday concerts." . . . Mrs. R. W. Ottman, Denton, Texas.

"Writing from El Dorado, Kansas, I send my thanks to WNAD for the only programs of classical music available to the radio public of this state." . . . Mrs. Jim B. McWilliams.

"As a voice teacher and choir director, I am sure your programs will be a great help as well as a pleasure to me." . . . Mrs. Arthur Kyle, Durant.

"I enjoy very much the classical recordings broadcast from your station." . . . Sally Manton, Weatherford.

"Thank you for your fine broadcasting. It is a continual delight." . . . Mrs. H. C. Upham, Oklahoma City.

"My husband and I enjoy your musical programs very, very much." . . . Mrs. Ernest Hinrichs, Pawnee.

"Thank you for giving me the use of my radio once more. No more soap and swing, just plenty of beautiful music." . . . Mrs. William Moorhead, Fayetteville, Arkansas.

"Enjoyed French classes last year." . . . Mrs. W. F. Thomas, jr., Tulsa.

"We listen to your station a great percentage of our listening time." . . . Mrs. Fred K. Bailey, Putnam.

"For some time I have looked to the programs of WNAD as a source of recreation and profit." . . . Miss Helen L. Martin, Winfield, Kansas.



Scanned from the National Association of Educational Broadcasters Records  
at the Wisconsin Historical Society as part of  
"Unlocking the Airwaves: Revitalizing an Early Public and Educational Radio Collection."



A collaboration among the Maryland Institute for Technology in the Humanities,  
University of Wisconsin-Madison Department of Communication Arts,  
and Wisconsin Historical Society.

Supported by a Humanities Collections and Reference Resources grant from  
the National Endowment for the Humanities



Any views, findings, conclusions, or recommendations expressed in this publication/collection do not necessarily reflect those of the  
National Endowment for the Humanities.